

MARKETPLACE

CONNECTING BUYERS & SELLERS IN THE FABRICATION AND METAL WORKING INDUSTRY



YOUR SUCCESS IS OUR BUSINESS

METAL DE-BURRING AND FINISHING



PRESS BRAKES



PLATE ROLLS



IRONWORKERS



PROFILE ROLLS



BANDSAWS



PUNCHING MACHINES



FOLDING MACHINES



LASERS



QUALITY - SERVICE - VALUE

Visit our website: www.ferricmachinery.com

10 Natura Way
Cambridge, ON N3C 0G7
Toll Free: 1-877-337-7424

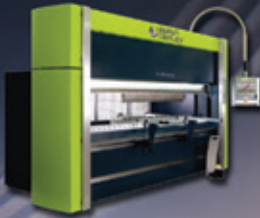
sales@ferricmachinery.com
www.ferricmachinery.com



Westway Machinery Ltd.

for premium products
outstanding service for
over 45 years.

Press Brakes



Multi-Bend Center



Laser Cutters



Tube Benders



Band Saws



Sanding & Deburring



Waterjet Cutters

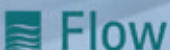
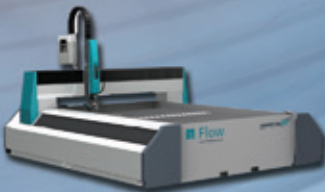
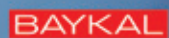


Plate Rolls



Plate Shears



Call Today!



WESTWAY MACHINERY LTD.

TOLL FREE: 800.263.1199

WestwayMachinery.com





MODERN TOOL LTD

Machine Tools and Fabrication Equipment since 1960.
Sales & Service

MODERNTOOL.COM



BRAKE PRESSES SHEARS LASERS PLASMAS PLATE ROLLS IRONWORKERS CNC MILLING MACHINES BORING MILLS SAWS
CNC LATHES & MANUAL LATHES GRINDERS ROLL BENDERS PORTABLE MACHINE TOOLS TUBE & PIPE BENDERS



ACCURL Masterline 3015-4KW, 5' x 10' Fiber Laser.
Prices starting at \$419,900 CAD including installation and training.

ACCURL Masterline 3015-6KW, 5' x 10' Fiber Laser.
Prices starting at \$495,900 CAD including installation and training.

Includes:

- Dual tables with auto shuttle
- IPG Fiber laser source
- Precitec Procutter Head
- Fume Extractor.

Upgrade to 6' x 12' table for an additional \$15K.

3 Year Factory warranty on the machine, and 2 years on IPG power source!

Available in sizes up to 8' x 26' and up to 15KW.

**MODERN TOOL HAS A COMBINED INVENTORY OF
OVER 600 MACHINES (BOTH NEW AND USED)
FOR QUICK DELIVERY.**

PLEASE CONTACT US ABOUT YEAR END SPECIALS.

ONTARIO OFFIC :

1215 RINGWELL DRIVE, NEWMARKET, ONT., L3Y 8T8

1-905-235-4199

CALGARY OFFICE (HQ):

11488 70TH STREET SE, CALGARY, AB, T2C 4Y3

1-403-236-1150

Newmarket, ON * Calgary, AB * Edmonton, AB * Saskatoon, SK * Atlantic Canada



CML Machinery Inc.
300 Bradwick Drive
Vaughan, ON L4K 1K8

Helping your business grow for over 40 years

We Service 100% of Everything We Sell

Hydraulic Shears & Press Brakes

VIMERCATI



Tube/Profile Rolling Machines



Wire Benders



Pipe/Tube Bending Machines Tube Bending Machines



IMET
SAWING
TECHNOLOGY



P: 416-661-4609 • F: 416-661-5993 • 1-877-265-6224

See our lineup of products at: www.cmlmachinery.com

Finally, a laser that can **think for you.**



The “brains” behind the **GX-F ADVANCED** Series is the proprietary Mitsubishi Electric artificial neural network technology *Maisart*, which imitates neurons in the human brain. It uses audio and light sensors to monitor the cutting process in real time, automatically adjusting parameters to optimize cutting performance.

Designed by Mitsubishi engineers and all major components built by Mitsubishi, the **GX-F ADVANCED** Series is one of the **only laser systems in the industry with a single source for service and support.** Visit us at mcmachinery.com



CSNC CARBIDE CIRCULAR SAW

ONE CARBIDE SAW DOES THE WORK OF FIVE CONVENTIONAL FACTORY BAND SAWS, WITHOUT SACRIFICING QUALITY

Cut 4 to 5 times faster than a conventional band saw with a clean surface finish that seldom requires a secondary operation. Standard features on all HYDMECH CSNC-Series high production circular saws include:

- automatic bar loading magazine with adjustable incline
- mist fume exhaust system
- automatic lubrication system for all moving parts
- programmable part cut length and trim cut length
- automatic sorting of trim cuts, remnants, and cut parts
- automatic chip auger
- mist blade lubrication system
- remote diagnostic service



HYDMECH RELIABLE SAWS. RELIABLE PEOPLE. HYDMECH.COM

MACHINERY

BRAKES MANUAL

2' x 18 ga.	SAMPSON, Box & Pan Brake, new, stock,	\$995	Mississauga	Westway	905 803 9999
4' x 22 ga.	TENNSMITH, Bench Brake, new, stock	Call	Mississauga	Westway	905 803 9999
4' x 22 ga.	TENNSMITH, Box and pan brake - new, stock	Call	Mississauga	Westway	905 803 9999
4' x 16 ga.	TENNSMITH, Bench Brake - new, stock	Call	Mississauga	Westway	905 803 9999
4' x 16 ga.	TENNSMITH, Box & Pan Brake, - new, stock	Call	Mississauga	Westway	905 803 9999
4' x 12 ga.	TENNSMITH, Box & Pan Brake, - new, stock	Call	Mississauga	Westway	905 803 9999
6' x 16 ga.	TENNSMITH, Box and Pan Brake, new, stock	Call	Mississauga	Westway	905 803 9999
6' x 12 ga.	SAMPSON, Box & Pan Brake, LD612U, new, stock	Call	Mississauga	Westway	905 803 9999
8' x 18 ga.	TENNSMITH - Apron Brake, new, stock	Call	Mississauga	Westway	905 803 9999
8' x 16 ga.	TENNSMITH - Apron Brake, new, stock	Call	Mississauga	Westway	905 803 9999
8' x 12 ga.	SAMPSON, Apron Brake, new, stock	Call	Mississauga	Westway	905 803 9999
8' x 12 ga.	SAMPSON, Hydraulic, Box & Pan Brake, New	Call	Mississauga	Westway	905 803 9999
10' x 18 ga.	TENNSMITH, Apron Brake New, stock	Call	Mississauga	Westway	905 803 9999
10' x 16 ga.	TENNSMITH, Apron Brake New, Stock	Call	Mississauga	Westway	905 803 9999
10' x 16 ga.	NATIONAL, New Hand Brake, 100% USA MADE -	\$9,950	Toronto	Stevens Machinery	866 798 3611
10' x 14 ga.	SAMPSON, Hydraulic Box & Pan, In Stock, New	Call	Mississauga	Westway	905 803 9999

COIL HANDLING & FEEDING

STOCK REEL	Littell Double Sided Stock Reel, 300 Lbs Each Side, 6.5" Wide x 46" OD, Manual, Keeper Arms	\$1,000	Toronto	Stevens Machinery	866 798 3611
STOCK REEL	Littell 600 Lb Capacity, 10" Width x 44" OD Coil, Keeper Arms, 110 Volt Motor	\$1,950	Toronto	Stevens Machinery	866 798 3611
UNCOILER	Motorsed, 6,000 Lbs, MECON, 24" Wide x 60" OD, Keeper Arms, Variable Speed, 1.5 Hp, 575 Volt	\$5,950	Toronto	Stevens Machinery	866 798 3611
CRADLE STRAIGHTENER	COOPER WEYMOUTH, A/C, 15,000 lbs, 62" OD x 18" W, 7 Roll, 15Hp, 230/460V	\$15,000	Toronto	Stevens Machinery	866 798 3611
Rapid Air	Feeds in Stock, RAPIDAIR, 2"-8" wide, New	Call	Mississauga	Westway	905 803 9999
MECON	Servo feed / straightener, 48" wide, pre-owned	Call	Mississauga	Westway	905 803 9999
COE	42" Power Straightener, Pre-Owned	Call	Mississauga	Westway	905 803 9999
DALLAS	24" Power Straightener, 0.50" cap, Ultrasonic Loop Control, Pre-owned	Call	Mississauga	Westway	905 803 9999
COLT	12" x 0.125" Powered Straightener, 7 Roll, Angled head, Pre-owned	Call	Mississauga	Westway	905 803 9999

DEBURRING & FINISHING MACHINES

BACK STAND IDLER FOR BUFFER - 8" OD X 4.25" RUBBER WHEEL ON PLATE WITH ADJUSTABLE SPRING	\$275	Toronto	Stevens Machinery	866 798 3611
BUFFER FORD SMITH, 10 Hp, 17" Long Shafts, 24" Throats, Brake, On/Off Switch, 550 Volt	\$2,750	Toronto	Stevens Machinery	866 798 3611
BUFFER VERY LARGE, 2 x 7.5 Hp Motors, One for Each Side, 20" Shafts, 1-3/4" Thread, 575 Volt	\$3,950	Toronto	Stevens Machinery	866 798 3611
BURRMASER Tube End Deburring Machines, Single & Double End, High Speed, NEW & USED	Call	Toronto	Stevens Machinery	866 798 3611
CEMCO Deburring Machine 37" Wide, Dry, Scotchbrite Drum, Smooths Edges & Surface, Like New, 575V	\$19,500	Toronto	Stevens Machinery	866 798 3611
FALLS, D-BUR-R Machine, Model 131, 2 Station - Deburrs & Smooths Sheet Metal Edges, 115 Volt	\$5,500	Toronto	Stevens Machinery	866 798 3611
MIDWEST SANDRIGHT MINI 9-9" Wide, (NEW), 1 Head, Dry, 5 Hp Motor, 220/60/1 Volt	\$12,950 US	Toronto	Stevens Machinery	866 798 3611
MIDWEST SANDRIGHT MINI 9-9" Wide, (NEW), 1 Head, Dry, 7.5 Hp, Vacuum Bed, Dust Collector - 100% MFD IN USA	Call	Toronto	Stevens Machinery	866 798 3611
MIDWEST SANDRIGHT 37" & 52" Wide, (NEW), Dry & Wet, 575 Volt, Belts & Brushes, 100% MFD IN USA	Call	Toronto	Stevens Machinery	866 798 3611
MIDWEST SANDRIGHT Wet Dust Collectors, (NEW), 1200-5500 CFM, 100% Stainless Steel - 100% MFD IN USA	Call	Toronto	Stevens Machinery	866 798 3611
MIDWEST SANDRIGHT MIGHTY 9 - 9" Wide, (NEW), 2 Head, Dry, 7.5 Hp, Vacuum Bed, Dust Collector - 100% USA MADE	Call	Toronto	Stevens Machinery	866 798 3611
SOCO Tube End Chamfering, 4" cap, new, stock	Call	Mississauga	Westway	905 803 9999
WEBER 43", 53", 63" Wide, (NEW), Multi-Head, Deburrs & Edge Finishes, FULL CNC CONTROL - POR	Call	Toronto	Stevens Machinery	866 798 3611
WEBER (NEW) PT-MRB-1350, Multi-Head, Abrasive Belt, MRB Brushes, Vacuum Bed, PLC Control, Auto Thickness - STOCK	Call	Toronto	Stevens Machinery	866 798 3611
WEBER (NEW) PT COMPACT DP(c)-1350, Multi-Head, Abrasive Belt, Planetary Brushes, Vacuum Bed, PLC, Auto Thickness - STOCK	Call	Toronto	Stevens Machinery	866 798 3611

DRILLS & GRINDERS

AMCO Geared-Head, # 3 MT, Floor Model, High/Low Speeds to 3,480 rpm, 3/4" & 1 Hp, 600 Volt	\$2,950	Toronto	Stevens Machinery	866 798 3611
BUFFALO Floor Model Drill, # 15, 1/2" Chuck, 10" x 10" Table, 1/2 Hp Motor, 110 Volt	\$450	Toronto	Stevens Machinery	866 798 3611
BUFFALO Floor Model Drill, # 18, # 3 MT, 1" Capacity, 14" x 14" Table, 1.5 Hp, 550 Volt,	\$1,750	Toronto	Stevens Machinery	866 798 3611



SCAN TUBE

STEEL SERVICES LTD.

NEBETCO

STAINLESS INC.

Quality Engineering Stainless Steels Since 1978



One Stop For Your Bar & Hollow Bar Needs

ISO 9001:2015 + AS9120 B

HOLLOW BAR / MECHANICAL TUBE

STOCKING 304/304L & 316/316L, 2" TO 10" OD
ASTM A511/A312 & ASME SA479

SOLID BAR

STOCKING 304L, 316L, 410 & 17-4 PH
ONLY DFAR COMPLIANT PRODUCTS, 2" TO 18" DIAM.



SCAN TUBE STEEL SERVICES LTD.
5640 McAdam Rd, Unit #1, Miss., ON L4Z 1T2
1-800-268-2907 www.scantubesteel.com

NEBETCO STAINLESS INC.
Buffalo, NY 14207
1-800-295-7419 info@scantubesteel.com

Precision Edge Rounding & Finishing



**Deburring
Deslagging
Edge Rounding
Laser Oxide Removal
Surface Finishing**



WEBER PT

Perfect metal machining at its best

- Up to 4 stations
- 43", 53" and 63" widths
- New generation Weber "i-Touch" screen control
- Variable grinding belt length
- CBF technology for a perfect surface finish
- Easy accessibility for maintenance
- Modular design for flexible station arrangement
- Optional top/bottom machining
- MRB brush system for perfect edge deburring



WEBER

Hans Weber Sales & Service
P 913.254.1611 • F 913.254.1582
sales@weberamerica.com • www.weberamerica.com

DRILLS & GRINDERS

SOLBERGA	Geared-Head, # 4 MT, 5/8" Chuck & Arbor, Power Down Feed, 2 Speed Motor, 550 V	\$4,950	Toronto	Stevens Machinery	866 798 3611
WILTON	Geared-Head Drill, # 3MT, 8 Speeds, 1" Cap In Steel, 1.3 & 1.6 Hp, 220/60/3 Volt	\$2,250	Toronto	Stevens Machinery	866 798 3611
EDLUND	Heavy Duty Column Drill, large table, Pre-OPwned	Call	Mississauga	Westway	905 803 9999
MAGNETIC CHUCKS	6" X 12", 8" X 24", 15-3/4 OD - COME AND HAVE A LOOK!!	Call	Toronto	Stevens Machinery	866 798 3611
6" x 18"	CHEVALIER, FSG-618, Manual Feeds, Coolant/Dust Unit, 1 Hp, 550 V	\$4,750.00	Toronto	Stevens Machinery	866 798 3611
6" x 18"	CHEVALIER, FSG-618M, Manual Feeds, Dust Collector, 1 Hp, 550 V	\$3,950.00	Toronto	Stevens Machinery	866 798 3611
5" x 10"	DELTA/ROCKWELL, Manual Feeds, Cabinet Base, 1/2 Hp Motor, 110 Volt	\$1,950.00	Toronto	Stevens Machinery	866 798 3611
6" x 78"	HM, Model TAS 150, Angle, Belt, 5HP, 550V	\$2,950.00	Toronto	Stevens Machinery	866 798 3611
6" x 48"	Belt, # P-6-48, SANDER - PROGRESS - Horiz/Vert, On Stand, 1 Hp Motor, 110 Volt	\$1,475.00	Toronto	Stevens Machinery	866 798 3611

IRON WORKERS

38 ton	FABMASTER, Punch, 12" throat, New, 575/3/60	Call	Mississauga	Westway	905 803 9999
55 ton	FABMASTER, 4" angle, 12" flat, 1-1/4" bar, New, In Stock	Call	Mississauga	Westway	905 803 9999
60 ton	FABMASTER, Punch, 12" throat, New, Stock	Call	Mississauga	Westway	905 803 9999
66 ton	FABMASTER, 4" angle, 14" flat, 1-1/2" bar, brake, New, Stock	Call	Mississauga	Westway	905 803 9999
66 ton	FABMASTER, 5" angle, 14" flat, 1-1/2" bar, New, Stock	Call	Mississauga	Westway	905 803 9999
88 ton	FABMASTER, 6" angle, 18" flat, 1-3/4" bar, New, Stock	Call	Mississauga	Westway	905 803 9999
88 ton	FABMASTER Punch, 20" throat, New, Stock	Call	Mississauga	Westway	905 803 9999
110 ton	FABMASTER, 6" angle, 24" flat, 1-3/4" bar, New, Stock	Call	Mississauga	Westway	905 803 9999
135 ton	FABMASTER, 6" angle, 24" flat, 2" bar, New	Call	Mississauga	Westway	905 803 9999
180 ton	FABMASTER, 8" angle, 30" flat, 2-1/4" bar, New, Stock	Call	Mississauga	Westway	905 803 9999
66 ton	Spartan, Model IWDX, 5" x 5" Angle, 20" throat, 14" Flat, Pre-owned	Call	Mississauga	Westway	905 803 9999
55 ton	FABMASTER, IW 55A, 4" angle, 12" flat, 1-1/4" bar, Pre-Owned	Call	Mississauga	Westway	905 803 9999
143 ton	Mubea Ironworker, KBL OPTIMA 143-8F, 29" throat, 6" x 7/8" Angle, 12" flat, Pre-owned	Call	Mississauga	Westway	905 803 9999
180 ton	Durma Ironworker, Model 165/300, 8" x 8" x 5/8" Angle, 29" x 3/4" Flat shear, 2013, Pre-owned	Call	Mississauga	Westway	905 803 9999
OMS	170 SL Mechanical Ironwork - USED- In Stock	Call	Concord	CML Machinery	905 669 5744

LATHES & LATHES CNC

9" x 22"	SOUTH BEND, 3 & 4 Jaw Chucks, Taper Att., Change Gears, 1/4 Hp, 110 Volt	\$1,950	Toronto	Stevens Machinery	866 798 3611
LEBLOND	REGAL 14" Swing, 40" CC, pre-owned	Call	Mississauga	Westway	905 803 9999

MILLING MACHINES

9" x 49"	BEMATO, Turret, R8, 2 Axis DRO, Variable Speed, 3 Hp Motor, 575 Volt,	\$3,950	Toronto	Stevens Machinery	866 798 3611
9" x 42"	PROSTAR, Turret, R8, 3 Axis DRO, Variable Speed, Power Feeds All Ways, 3 Hp, 575 Volt	\$5,950	Toronto	Stevens Machinery	866 798 3611
11" x 49"	TOS, FNK 25, Turret, R8, 56-4,500 RPM, Pwr Long Feed, 3 HP, 550V	\$3,950	Toronto	Stevens Machinery	866 798 3611
12" x 54"	DARBERT, Turret, # 30 MT, V.S., 2 Axis DRO, Coolant, 5 Hp, 550 V	\$4,950	Toronto	Stevens Machinery	866 798 3611
IRM ROLLING MILL	2 High x 6" Wide, Uncoiler/Recoiler, Vari-Speed, New 2000, 7.5 Hp, 230/60/3 V	\$35,950	Toronto	Stevens Machinery	866 798 3611
M.G. 2 WIRE FLATTENING MILL	2 High x 6" Wide, 77 FPM, .0039" to 0.157", 1Hp, 208/230/6-3V	\$6,950	Toronto	Stevens Machinery	866 798 3611

PRESSES

DIE SHOES	For Presses - Different Sizes In Stock - COME AND HAVE A LOOK!!	Call	Toronto	Stevens Machinery	866 798 3611
800 LBS	EMG (NEW), Pneumatic Bench Press, Adj. Stroke, Palm Buttons	\$2,950	Toronto	Stevens Machinery	866 798 3611
1/2 ton	EMG (NEW), Manual Impact Press, 1" Stroke, 0.008" Impact Stroke	\$995	Toronto	Stevens Machinery	866 798 3611
1 ton	DENNISON, Hyd., Palm Buttons, Bench Model, 110 Volt	\$1,250	Toronto	Stevens Machinery	866 798 3611
1-1/2 ton	EMG (NEW), Manual Toggle Press, 2.4" Stroke, 9.85" Shut Height	\$2,750	Toronto	Stevens Machinery	866 798 3611
2 ton	ALVA ALLEN, OBI, 3/4" St, Mechanical, Bench Model, Hand Trip, 1/4 Hp, 110 V	\$2,250	Toronto	Stevens Machinery	866 798 3611
2 ton	AZIMUTH, OBI, Bench Model, 1" St, 4-5/8" SH, Mechanical, 1/3 Hp, 110 V	\$2,250	Toronto	Stevens Machinery	866 798 3611
3 ton	MANUAL ARBOR PRESS, 5-1/2" Throat, 12-1/2" Open Height, On Stand	\$550	Toronto	Stevens Machinery	866 798 3611
3 ton	GREENERD MANUAL ARBOR PRESS, 17" Throat, Mounted on 36" x 36" Table	\$850	Toronto	Stevens Machinery	866 798 3611
4 ton	ALCECO, OBI, 1-1/4" St, 5-3/4" SH, 1/3 Hp, Bench, 550 Volt	\$2,500	Toronto	Stevens Machinery	866 798 3611
4 ton	ALCECO, OBI, 4-8DT, 8" Throat, 1-1/4" St, Mech, 1/3 Hp, 208/230/460 Volt	\$2,950	Toronto	Stevens Machinery	866 798 3611
4 ton	AZIMUTH, OBI, 4-DT12, 12" Throat, 1-1/4" St, 5-3/4" SH, 1/3Hp, 110Volt	\$3,950	Toronto	Stevens Machinery	866 798 3611
4 1/2 ton	FAMCO, OBI, 1-1/4" St, 5-1/4" SH, Mech, 1/3 Hp, 550 Volt (2 AVAILABLE)	\$2,500	Toronto	Stevens Machinery	866 798 3611
5 ton	PRESS-RITE, OBI, 1-1/4" St, 6-3/4" SH, On Legs, 110 Volt	\$2,750	Toronto	Stevens Machinery	866 798 3611
5 ton	WHITNEY JENSEN, Kick Press, 24" Deep Throat, Floor Model	\$1,500	Toronto	Stevens Machinery	866 798 3611
6 ton	AZIMUTH, OBI, 1-1/4" St, 6-3/8" SH, Mech Clutch, Bench, 1/2 Hp, 110 Volt	\$3,950	Toronto	Stevens Machinery	866 798 3611
6 ton	AZIMUTH, OBI, 2" St, 5-3/4" SH, Mech Clutch, Bench, 1/2 Hp, 110 Volt	\$3,950	Toronto	Stevens Machinery	866 798 3611
6 ton	ALCECO, OBI, 1" St, 14" SH Over Bed, Electric Foot Pedal, 1/2 Hp, 115 Volt	\$4,950	Toronto	Stevens Machinery	866 798 3611
10 ton	ALCECO, OBI, 1-3/4" St, 6-3/4" SH, Air Act Mech Clutch, 1 Hp, 550 Volt	\$4,550	Toronto	Stevens Machinery	866 798 3611
10 ton	ROUSSELLE, OBI, 2" St, 6.5" SH, Mech. Clutch, 1/2 Hp, 110/220 Volt	\$4,250	Toronto	Stevens Machinery	866 798 3611

Looking for new or used Metal Fabrication equipment, Machine Tools or other Metalworking Machinery, check out:

www.steelmarketplace.com

Search and view what you want, when you want to!!!

STEVENS MACHINERY
Sales Inc.

2 Royalcrest Road,
Etobicoke (Toronto) ON., Canada M9V 2L5
Phone: 416-798-3611
Toll Free: 1-866-798-3611
www.stevensmachine.com
Email: andrew@stevensmachine.com

!!ANNOUNCING OUR MOVING SALE!!

AFTER 18 YEARS MY LEASE IS UP!!
ALL USED MACHINES WILL BE DISCOUNTED
20% FOR NOVEMBER & DECEMBER!!

AIR COMPRESSORS

10 Hp, 80 Gallon Horizontal Tank, Two Stage Piston Vee Head, 550 Volt - \$2,950.
15 HP, 120 Gallon Horizontal Tank, Two Stage Piston Vee Head, 550 Volt - \$3,950.

BRAKES, Manual

10 Ft x 16 Gauge, NATIONAL, New Hand Brake, 100% USA MADE -- \$9.95.

COIL HANDLING & FEEDING

UNCOLER - Littell Double Sided, 300 Lbs Each Side, 6.5" Wide x 46" OD, Manual, Keeper Arms - \$1,000.
UNCOLER - Littell, 600 Lb Capacity, 10" Width x 44" OD Coil, Keeper Arms, 110 Volt Motor - \$1,950.
UNCOLER - COLT, 2,500 lbs x 10" Wide x 40" OD Coil, Keeper Arms, 1 Hp DC Motor, Variable Speed, 110 V - \$3,250
UNCOLER - PIA, 2,500 lbs x 14" Wide x 48" OD Coil, 1/2 Hp Motor, Variable Speed, Manual Expansion, 110 V - \$4,950.
UNCOLER - AMERICAN STEEL, 2,500 lbs x 18" Wide x 48" OD Coil, Keeper Arms, Drag Brake, Manual - \$3,250.
UNCOLER - K. VOGEL, 2,500 lbs x 18" Wide x 50" OD Coil, Dancer Arm, 1 Hp Motor, 550 Volt - \$3,950.
UNCOLER - K. VOGEL, 2,500 lbs x 18" Wide x 48" OD Coil, Keeper Arms, 1 Hp DC Motor, Var Speed, 550 Volt - \$4,950.
CRADLE-STRAIGHTENER - COOPER WELMOUTH, AC, 15,000 Lb, 62" OD x 18" W, 7 Roll, 15 Hp, 230/460 V - \$15,000.

DEBURRING & FINISHING MACHINES

BACK STAND IDLER FOR BUFFER - 8" OD x 4.25" RUBBER WHEEL ON PLATE WITH ADJUSTABLE SPRING - \$275.
BUFFER, FORD SMITH, 10 Hp, 17" Long Shafts, 24" Throats, Brake, On/Off Switch, 550 Volt - \$2,750
BUFFER, VERY LARGE, 2 x 7.5 Hp Motors, One for Each Side, 20" Shafts, 13/4" Throat, 575 Volt - \$3,950
BURRMASTER, Turret End Deburring Machines, Single & Double End, High Speed, NEW & USED
CEMCO Deburring Machine, 37" Wide, Dry, Scotchbrite Drum, Smooths Edges and Surface, Like New, 575V - \$19,500
FALLS, D-BUR-R Machine, Model 131, 2 Station - Deburs & Smooths Sheet Metal Edges, 115 Volt - \$5,500
MIDWEST SANDRIGHT MINI 9-9" Wide, (NEW), 1 Head, Dry, 7.5 Hp, Vacuum Bed, Dust Collector, 100% MFD IN USA >
MIDWEST SANDRIGHT MIGHTY 9-9" Wide, (NEW), 2 Head, Dry, 7.5 Hp, Vacuum Bed, Dust Collector - 100% MFD IN USA
MIDWEST SANDRIGHT, 37" & 52" Wide, (NEW), Dry & Wet, 575 Volt, Bells & Brushes, 100% MFD IN USA
MIDWEST SANDRIGHT, Wet Dust Collectors, (NEW), 1200-550 CFM, 100% Stainless Steel - 100% MFD IN USA.
WEBER, 4", 5", 6", 8" Wide, (NEW), Multi-Head, Deburs & Edge Finishes in 1 pass, FULL CNC CONTROL - POR
WEBER (NEW) PT-1MRB-1350, Multi-Head, Abrasive Belt, MRB Brushes, Vacuum Bed, PLC Control, Auto Thickness WEBER,
(NEW) PT COMPACT DP16-1350, Multi-Head, Abrasive Belt, Planetary Brushes, Vacuum Bed, PLC, Auto Thickness

DRILLS

AMCO, Geared-Head, #3 MT, Floor Model, High/Low Speeds to 3,400 RPM; 1/4" & 1/2" H, 600 Volt - \$2,950
BUFFALO Floor Model Drill, #18, #3 MT, 1" Capacity, 14" x 14" Table, 1.5 Hp, 550 Volt - \$1,750
SOULBERG Geared-Head, #4 MT, 5/8" Chuck & Arbor, Power Down Feed, 2 Speed Motor, 550 V - \$4,950.
WILTON, Geared-Head Drill, #3 MT, 8 Speeds, 1" Cap in Steel, 1.3 & 1.6 Hp, 220/160/3 Volt, \$2,250

GRINDERS

MAGNETIC CHUCKS - 6" X 12", 8" X 24", 15-3/4 OD - COME AND HAVE A LOOK!!
5" X 10" - DELTA/ROCKWELL, Manual Feeds, Cabinet Base, 1/2 Hp Motor, 110 Volt - \$1,950
6" x 18" - CHEVALIER, Manual Feeds, Coolant & Dust Collector Unit, 1 Hp, 550 Volt - \$4,750
6" x 18" - CHEVALIER, Manual Feeds, Portable Dust Collector Unit, 1 Hp, 550 Volt - \$3,750
6" x 18" - EQUIPTOP, Manual Feeds, 1-1/2 Hp Motor, 550 Volt - \$3,350.
6" x 78" - HM, Model TAS 150, Angle, Belt, 5HP, 550V - \$2,950
6" x 48" Belt, # P-6-48, SANDER - PROGRESS - Vert, On Stand, 1 Hp Motor, 110 Volt - \$1,475

LATHES

9" x 22" - SOUTH BEND, 3 & 4 Jaw Chucks, Taper Att., Change Gears, 1/4 Hp, 110 Volt - \$1,950.00

SHEET METAL WORKING

20 GAUGE LOCKFORMER SPEEDNOTCH, 4 HEAD, 60 INCH LENGTH, 1 HP 110 VOLT - \$2,950

NOTCHERS

10 GAUGE x 3" x 3" BLADES, NOTCHERS, 2 UNITS AIR/OIL, FOOT PEDAL - \$3,750.
1/2" x 9" x 9" APOLLO, Model TV 25016 Hydraulic, Variable Angle, 5 Hp, 600 V, Elect. Foot Pedal - \$8,950.00

MILLING MACHINES

9" X 48" - BENIATO, Turret, R8, 2 Axis DRO, Variable Speed, 3 Hp Motor, 575 Volt - \$3,350.
9" X 42" - PROSTAR, Turret, R8, 3 Axis DRO, Variable Speed, Power Feeds All Ways, 3 Hp, 575 Volt - \$5,950.
11" X 49" - TOS, FNK 25, Turret, R8, 56 - 4,500 RPM, Pwr Long, Feed 3 Hp, 550 V - \$3,950.
12" x 54" - DARBERT, Turret, #30 MT, Variable Speed, 2 Axis DRO, Coolant, 5 Hp, 550 V - \$4,950.
IRW ROLLING MILL - 2 High x 6" Wide, Uncoliner/Recoiler, Var-Speed, New 2000, 7.5 Hp, 230/60/3 V - \$35,950.
M.G.Z. WIRE FLATTENING MILL - 2 High x 2" Wide, 77 FPM, .0039" to 0.157", 1 Hp, 208/230/60/3 V - \$6,950.

PRESSES

DIE SHOES For Presses - Different Sizes In Stock - COME AND HAVE A LOOK!!
800 LBS - EMG (NEW), Pneumatic Bench Press, Adj. Stroke, Palm Buttons - \$2,950.
1/2 ton - EMG (NEW), Manual Impact Press, 1" Stroke, 0.008" Impact Stroke - \$995.
1 ton - DENINSON, Hyd., Palm Buttons, Bench Model, 110 Volt, \$1,250
1-1/2 ton - EMG (NEW), Manual Toggle Press, 2.4" Stroke, 9.85" Shut Height - \$2,750.
2 ton - ALVA ALLEN, OBI, 1/2" St, Mechanical, Bench Model, Hand Trip, 1/2 Hp, 110 V - \$2,250
2 ton - AZIMUTH, OBI, Bench Model, 1" St, 4-5/8" SH, Mechanical, 1/3 Hp, 110 V - \$2,550
3 ton - MANUAL ARBOR PRESS, 5-1/2" Throat, 12-1/2" Open Height, On Stand - \$550
3 ton - GREENERD MANUAL ARBOR PRESS, 17" Throat, Mounted on 36" x 36" Table - \$850
4 ton - ALCECO, OBI, 1-1/4" St, 5-3/4" SH, 1/3 Hp, Bench, 550 Volt - \$2,500
4 ton - ALCECO, OBI, 4-8T12, 8" Throat, 1-1/4" St, Mech, 1/3 Hp, 208/230/460 Volt - \$2,950
4 ton - AZIMUTH, OBI, 4-8T12, 12" Throat, 1-1/4" St, 5-3/4" SH, 1/3 Hp, 110 Volt - \$3,950
4-1/2 ton - FAMCO, OBI, 1-1/4" St, 5-1/4" SH, Mech, 1/3 Hp, 550 Volt - \$2,500
5 ton - PRESS-RITE, OBI, 1-1/4" St, 6-3/4" SH, On Legs, 110 Volt - \$2,750
5 ton - WHITNEY JENSEN, Kick Press, 24" Deep Throat, Floor Model - \$1,500
6 ton - ALCECO, OBI, 1" St, 14" SH Over Bed, Electric Foot Pedal, 1/2 Hp, 115 Volt - \$4,950
6 ton - AZIMUTH, OBI, 1-1/4" St, 6-3/8" SH, Mech Clutch, Bench, 1/2 Hp, 110 Volt - \$3,950.
6 ton - AZIMUTH, OBI, 2" St, 5-3/4" SH, Mech Clutch, Bench, 1/2 Hp, 110 Volt - \$3,950.
6 ton - ALCECO, OBI, 1-3/4" St, 6-3/4" SH, Air Act Mech Clutch, 1 Hp, 550 Volt - \$4,650.
10 ton - ROUSSELLE, OBI, 2" ST, 6.5" SH, Mech. Clutch, 1/2 Hp, 110/220 Volt - \$4,250.
15 ton - BENCHMASTER, OBI, 2" St, 6-3/4" SH, Air Mech Clutch, Pairs, Foot Pedal, 240 Volt - \$4,500
15 ton - ROUSSELLE, OBI, 2" St, 7-3/4" SH, Mechanical Clutch, 1 Hp, 550 Volt - \$4,250.
15 ton - ROUSSELLE, OBI, 2" St, 7-3/4" SH, Air Act Mech Clutch, 1 Hp, 220/440 - \$4,550.
20 ton - BLOW, OBI, 2" St, 7-3/4" SH, Mech. Clutch, 1 Hp, 550 Volt - \$3,850
20 ton - BROWN BOGGS, 2" Stroke, 11" x 20" Bed, Mechanical Clutch, 1-1/2 Hp, 550 Volt - \$4,250.
20 ton - PRESS-RITE, OBI, 2" St, 7" SH Over 1-1/2" Bolster, 2 Hp Motor, 230/460 Volt - \$4,550.
22 ton - NIAGARA, OBI, 2" St, 8-3/4" SH, Air Act, Mech Clutch, Pairs, Foot Pedal - \$4,550.
25 ton - YOSHINO, PIERCING, 1/2" Stroke, Air Clutch, 575 Volt, Pairs, Safety Control - \$7,500
28 ton - BROWN BOGGS, OBI, 2-1/2" St, 6-3/4" SH, Air Act Mech Clutch, 2 Hp, 550 Volt - \$4,550
30 ton - BROWN BOGGS, OBI, 2-1/2" St, 9" SH Over Bed, Mechanical Clutch, 2 Hp, 550 Volt - \$5,950
30 ton - BROWN BOGGS, OBI, 2-1/2" St, 6-3/4" SH, Air Act Mech Clutch, 2 Hp, 550 Volt - \$5,950
30 ton - BROWN BOGGS, OBI, 6" St, 9-3/4" SH, Air Act Mech Clutch, 3 Hp, 550 Volt - \$5,250.
30 ton - ESNA, OBI, Adj. Stroke, 9" SH, 24" x 15" Bed, Mechanical Clutch, 5 Hp, 550 Volt - \$3,250.
40 ton - BROWN BOGGS, OBI, 2-1/2" St, 8" SH, 18-1/2" x 28" Bed, Air Act, Mech Clutch, 3 Hp, 550 V - \$6,950.

PRESS BRAKES

ELECTRIC CNC PRESS BRAKES (NEW) - COASTONE (MADE IN FINLAND SINCE 2004)
2 D GRAPHIC CONTROLS, 34" X 25 TON TO 13 FT X 165 TON, 3 AXIS TO XIS, LASER GUARDS,
SERVO DRIVE BALL SCREWS TO RAM WITH ENCODERS, CNC RAM CROWNING (STANDARD ON
ALL MACHINES OVER 6 FT, 550 VOLT, PSR READY, TRAINING & INSTALLATION
30 ton x 4 Ft, PROMECAM, Hydraulic Upstroking, Safety Lights, Mute, Hurco Back Gauge, 550 V - \$5,950.
40 ton x 6 Ft, PROMECAM, Hydraulic Upstroking, Safety Lights, Mute, Hurco Back Gauge, 550 V - \$7,250.
45 ton x 8 Ft, Allsteel, Hydraulic, Model 45-8, Safety Lights, 1 Set Dies, 10 Hp Motor, 575 Volt - \$8,950.
100 ton x 12 Ft, WYSONG, Hurco 2 Axis CNC, Hydraulic, Safety Lights, 15 Hp, 550 Volt, New; 999 - \$32,500
12 Ft Bottom Die Holder, 2-1/2" H x 3" W x 12" Top Slot, Grib Screws Every 10", 3/4" H x 12" W Tang on Bottom - \$4,500
12 Ft Manual Adjustable Crowned Die Holder, SPECIFIC, USA Made, 4-1/4" W x 2-5/8" H, Up To 300" Crown - \$5,950.

PUNCHING MACHINES

CLINCHING TOOL, NORLOK, Flange Watson, Portable, Air/Oil Booster Unit, 2 Pieces of 14 Gauge, 110 V - \$9,950
8 ton - ROTEX, Manual Turret Punch, #18C-2.25, 18 Stations, 26" Throat, All Punches & Dies - \$5,950
30 ton, STRIPPIT, Super 30/30, Single Head, 72 x 42 Table, Gauging, 4 Cabinets Tooling, 5 Hp, 575 Volt - \$8,950.00

SAND BLAST CABINETS

EMPIRE, PF-3648 SRB-4, 2 Gloves, Gun, Lights, 1 Hp, 110 Volt - \$3,950

SAWS

ROLL-IN VERTICUT, Boxer # 114, 10" x 12" Capacity, 3/4 Hp Motor, 110 Volt - \$3,250.
ROLL-IN VERTICUT, Boxer # 114-A, 10" x 12" Capacity, Tilting Table, 3/4 Hp Motor, 550 Volt - \$3,750.
ROLL-IN VERTICUT E-R, Mainer KM1012, 10" x 12" Capacity, 4 Speeds, 1 Hp Motor, 110 Volt - \$3,950.
Band Saw, Vertical, KBC, 18" Throat, Blade Welder, Var. Speeds, 23" x 11" Table, 2 Hp - \$2,300.
Cold Saw, DELTA, 12" Blade, Steel & Aluminum, Drip Coolant, 48" Infeed/Outfeed Extensions, 5 Hp Motor, 575 Volt - \$3,500.
Cold Saw, SCOTCHMAN, 12" Blade, Straight Cut, High/Low Speeds, Pneu. Infeed, Pneu. Vise, Pneu. Head - \$10,500.
PISTORIUS - Double Mitre Saw, 2 x 10" Blades, Pneu. Foot Pedal, 110/220 Volt - \$2,500
Radial Arm Saw, DEWALT, 16" Carbide Tipped Blade, 26" Travel, 5 Hp Motor, 575 Volt - \$3,950

SCISSORS

16 ga. x 94" - BARTH, 19" Cap, Foot Shear, Manual Hold Downs - \$3,950.
16 ga. X 94" - EDWARDS, Pneumatic Shear, Pneumatic Foot Pedal, Pneumatic Hold Downs - \$5,950
10 ga. x 96" - EDWARDS, Power Shear, Manual Back Gauge, Sq. Arm, 3 Front Sheet Supports, 10 Hp, 575 Volt - \$13,950.

WELDERS

275 AMP LINCOLN, TIG & STICK WELDER Plug, Cables, Microstart, Sq. Wave, 575/160 Volt - \$3,950
100 KVA, PRECISION, Press Type, 24" Th, Water Cooled Tips, 550 V - \$5,950
25 KVA, WELDOMATIC, Spot Welder, 18" Throat, Wetronic Decade 5 Control, Air Foot Pedal, 550 V - \$3,500
18 KVA, REX, Spot Welder, 14" Arms, Water Cooled Tips, Mech. Treadle, 550 V - \$1,500
15 KVA, WELDOMATIC, Spot Welder, 7-1/2" Arms, Water Cooled Tips, Mech. Treadle, 550 V - \$3,500
10 KVA, WELDOMATIC, Spot Welder, 12" Arms, Water-Cooled Tips, Mech. Treadle, 550 V - \$2,950
100 KVA, PRECISION, Spot Welder, Press Type, 24" Th, Water-Cooled Tips, 550 V - \$5,950
Wirefeeder, FRONIUS, VR180, Robotic, 4 Roller Drive, Digital Controlled For 3 Axis, New - \$2,900.00



FULLY ELECTRIC CNC SERVO-DRIVEN
BALL SCREW PRESS BRAKES



Wet Dust Collection Systems





CENTRAL RAIL SUPPLY LTD.

P.O. BOX 5158, L.C.D. 1, HAMILTON, ONTARIO L8L 8G1



CENTRAL RAIL NEW AND RELAY RAIL MINING RAIL & SWITCHWORK JOINT BARS / TRACKBOLTS FASTENERS

www.centralrailsupply.com

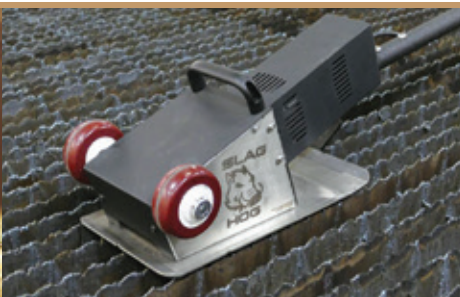
Tel: (905) 521-8477 - Fax: (905) 529-7912

Email: info@centralrailsupply.com

15 ton	BENCHMASTER, OBI, 2" St, 6-3/4" SH, Air Mech Clutch, Palms, Foot Pedal, 240 Volt	\$4,500	Toronto	Stevens Machinery	866 798 3611
15 ton	ROUSSELLE, OBI, 2" St, 7-3/4" SH, Air Act Mech Clutch, 1 Hp, 220/440	\$4,250	Toronto	Stevens Machinery	866 798 3611
15 ton	ROUSSELLE, OBI, 2" St, 7-3/4" SH, Air Act Mech Clutch, 1 Hp, 220/440	\$4,550	Toronto	Stevens Machinery	866 798 3611
20 ton	BLOW, OBI, 2" St, 7-3/4" SH, Mech. Clutch, 1 Hp, 550 Volt	\$3,850	Toronto	Stevens Machinery	866 798 3611
20 ton	BROWN BOGGS, 2" Stroke, 11" x 20" Bed, Mechanical Clutch, 1-1/2 Hp, 550 Volt	\$4,250	Toronto	Stevens Machinery	866 798 3611
20 ton	PRESS-RITE, OBI, 2" St, 7 SH Over 1-1/2" Bolster, 2 Hp, Motor, 230/460 Volt	\$4,250	Toronto	Stevens Machinery	866 798 3611
22 ton	NIAGARA, OBI, 2" St, 8-3/4" SH, Air Act, Mech Clutch, Palms, Foot Pedal	\$4,550	Toronto	Stevens Machinery	866 798 3611
25 ton	YOSHINO, PIERCING, 1/2" Stroke, Air Clutch, 575 Volt, Palms, Safety Control	\$7,500	Toronto	Stevens Machinery	866 798 3611
28 ton	BROWN BOGGS, OBI, 2-1/2" St, 6-3/4" SH, Air Act Mech Clutch, 2 Hp, 550 Volt	\$4,550	Toronto	Stevens Machinery	866 798 3611
30 ton	BROWN BOGGS, OBI, 2-1/2" St, 9" SH Over Bed, Mechanical Clutch, 2 Hp, 550 Volt	\$5,950	Toronto	Stevens Machinery	866 798 3611
30 ton	BROWN BOGGS, OBI, 2-1/2" St, 6-3/4" SH, Air Act Mech Clutch, 2 Hp, 550 Volt	\$5,950	Toronto	Stevens Machinery	866 798 3611
30 ton	ESNA, OBI, Adj. Stroke, 9" SH, 24" x 15" Bed, Mechanical Clutch, 5 Hp, 550 Volt	\$3,250	Toronto	Stevens Machinery	866 798 3611
30 ton	BROWN BOGGS, OBI, 6" St, 9-3/4" SH, Air Act Mech Clutch, 3 Hp, 550 Volt	\$5,250	Toronto	Stevens Machinery	866 798 3611
40 ton	BROWN BOGGS, OBI, 2-1/2" St, 8" SH, 18-1/2" x 28" Bed, Air Act, Mech Clutch, 3 HP, 550 V	\$6,950	Toronto	Stevens Machinery	866 798 3611
55 ton	JFY CNC BUS BAR Punch/Shear, MCS0, Pre-Owned	Call	Mississauga	Westway	905 803 9999
66 ton	SEYI SN1-66S, new	Call	Mississauga	Westway	905 803 9999
121 ton	SEYI SN1-121, new	Call	Mississauga	Westway	905 803 9999

PRESS BRAKES

	COASTONE (MADE IN FINLAND SINCE 2004), NEW ELECTRIC CNC, 2 D GRAPHIC CONTROLS, 34" X 25 TON CALL		Toronto	Stevens Machinery	866 798 3611
	TO 13 FT X 165 TON, LASER GUARDS, SERVO DRIVE BALL SCREWS TO RAM WITH ENCODERS, CNC RAM CROWNING				
	(STANDARD ON ALL MACHINES OVER 6 FT, 550 VOLT, PSR READY, TRAINING & INSTALLATION)				
30 ton x 4'	VIMERCATI - 4 Axis Hydraulic, New, In Stock	Call	Concord	CML Machinery	905 669 5744
45 ton x 8'	Allsteel, Hydraulic, Model 45-8, Safety Lights, 1 Set Dies, 10 Hp Motor, 575 Volt	\$8,950	Toronto	Stevens Machinery	866 798 3611
12 Ft Bottom Die Holder, 2-1/2" H x 3" W x 1/2" Top Slot, Grub Screws Every 10", 3/4" H x 1/2" W Tang on Bottom		\$4,500	Toronto	Stevens Machinery	866 798 3611
12 Ft Manual Adjustable Crowned Die Holder, SPECIFIC, USA Made, 4-1/4" W x 2-5/8" H, Up To .080" Crown		\$5,950	Toronto	Stevens Machinery	866 798 3611
45 ton x 8'	Allsteel, Model 45-8, Removeable Flanges, Pre-Owned	Call	Mississauga	Westway	905 803 9999
55 ton x 6'	NIAGARA, HB55-4-6, Hydraulic, 3 Axis, Autobend 10 control, Pre-Owned	Call	Mississauga	Westway	905 803 9999
88 ton x 8'	Finnpower, 6 axis, TS1 Control, Pre-owned	Call	Mississauga	Westway	905 803 9999
70 ton x 10'	Allsteel, Model 70-10, Hydraulic, Pre-Owned	Call	Mississauga	Westway	905 803 9999
88 ton x 8'	Millenium, 3 axis, Delem DA 41 control, 2011, pre-owned	Call	Mississauga	Westway	905 803 9999
140 ton x 8'	Wysong, 7 axis CNC, Pre-owned	Call	Mississauga	Westway	905 803 9999
143 ton x 10'	Trumpf, Model V 130, Delem control, 8 Axis CNC, Pre-Owned	Call	Mississauga	Westway	905 803 9999
100 ton x 12'	WYSONG, Hurco 2 Axis CNC, Hydraulic, Safety Lights, 15 Hp, 550 Volt, New: 1999	\$32,500	Toronto	Stevens Machinery	866 798 3611
130 ton x 10'	Accupress, Model 713010, 2 Axis, ETS 2000 control, Light Guards, Pre-Owned	Call	Mississauga	Westway	905 803 9999
130 ton x 12'	Accupress, Model 713012, manual crowning, ETS 3000 Control, Laser Beams, Pre-Owned	Call	Mississauga	Westway	905 803 9999
132 ton x 10'	BAYKAL, 5 axis +crowning, tooling, safety lights, stock	Call	Mississauga	Westway	905 803 9999
140 ton x 10'	SAFAN E-BRAKE ULTRA, New, In Stock	Call	Mississauga	Westway	905 803 9999
176 ton x 10'	BAYKAL, 7-axis+ crowning, tooling, safety lights, stock	Call	Mississauga	Westway	905 803 9999
176 ton x 12'	BAYKAL, 5 axis+crowning, tooling, safety laser beams, stock	Call	Mississauga	Westway	905 803 9999
220 ton x 12'	BAYKAL, 5 axis+crowning, tooling, safety laser beams, stock	Call	Mississauga	Westway	905 803 9999
220 ton x 12'	SAFAN E-BRAKE, New in stock	Call	Mississauga	Westway	905 803 9999



Cleaning of a cutting table in as little as 10 minutes.
The Slag Hog is a must have tool for CO2 and Fiber Lasers operating with traditional slat style cutting beds.



1.866.995.9910

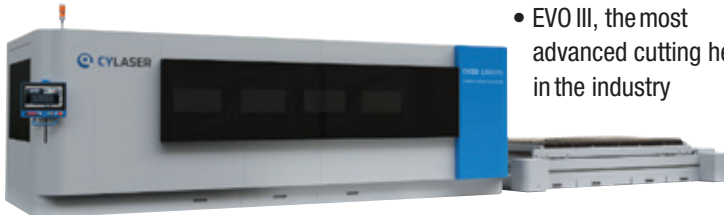


Fabricating Machinery Solutions Inc.

www.fmscanada.ca

FMS is the exclusive Canadian distributor of the Slag Hog slat cleaner.

IMPROVING YOUR PRODUCTIVITY IS JUST ONE PHONE CALL AWAY!



CY2D LM3015 FIBER LASER SYSTEM

- Quality build with modern design
- Load and unload options available
- Vega cutting technology for beam and spot size shaping
- Improved stainless and AL cutting
- Fiber power options available up to 15kw

CY2D S3015 FIBER LASER SYSTEM

- Compact design
- EVO III, the most advanced cutting head in the industry



DDM-4015 SERVO ELECTRIC PRESS BRAKE

- Bending capacity 40 tons
- Bending length 1530mm
- Up to 30% faster and up to 50% energy savings
- Electric models from 20-200 tons available
- Less maintenance
- More parts per shift
- User friendly



PUMA XL CNC HYDRAULIC PRESS BRAKE

- High precision bending results
- Deeper throat depths, higher stroke and longer daylight
- Less noise, stronger and faster
- Hydraulic models from 40-2000 tons



ACCU-KUT PLASMA

- Standard table width's are 6', 8' or 10'
- Standard table length 12', 24', 36' up to 48'
- Optional robo-kut bevel head
- Optional tube-kut



WATERJET X2

- 5' x 10' or 6' x 12' platform
- Reliable, ultra-high pressure up to 90,000 psi

ASK US ABOUT OUR COMPLETE LINE OF MAINTENANCE & CONSUMABLE PRODUCTS

1.866.995.9910



Fabricating Machinery Solutions Inc.+

www.fmscanada.ca

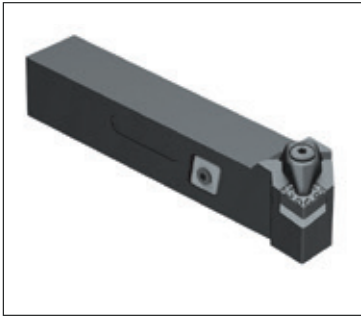
**CUTTING
TOOL**

PICKERS

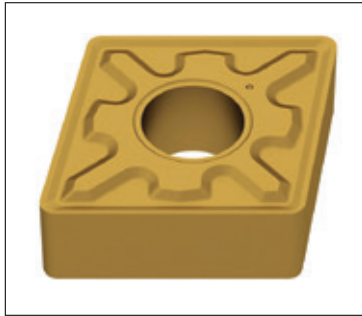


CERATIZIT
GROUP

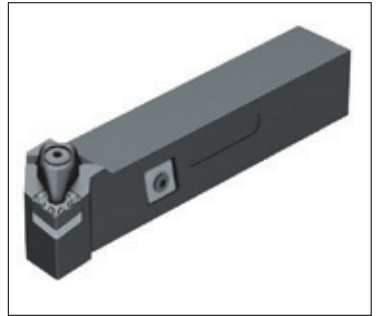
INVENTORY SALE



SALE PRICE: \$89.00
Reg \$230.00
DCLNL16-4D Tool Holder
(CNMG43*)
SKU 1000-102-699



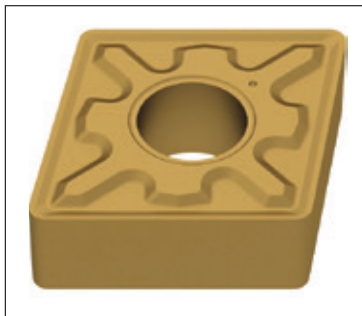
SALE PRICE: \$9.00
Reg \$15.33
CNMG432 M42 CTC2135
Carbide Insert
SKU 1000-112-834



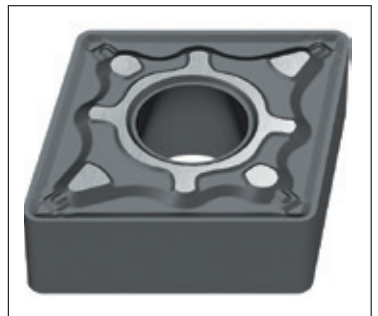
SALE PRICE: \$89.00
Reg \$230.00
DCLNR16-4D Tool Holder
(CNMG43*)
SKU 1000-111-436A



SALE PRICE: \$10.50
Reg \$17.07
CNMG431 M50 CTC125
Carbide Insert
SKU 1000-109-413



SALE PRICE: \$9.00
Reg \$15.33
CNMG433 M42 CTC2135
Carbide Insert
SKU 1000-112-968



SALE PRICE: \$10.50
Reg \$17.07
CNMG432 M50 CTC125
Carbide Insert
SKU 1000-112-861

www.cuttingtoolpickers.com

**CUTTING
TOOL**

PICKERS

**THE ONLINE SPECIALIST FOR
SURPLUS CUTTING TOOLS**



PRICE: \$9.95
TNMC 43NV CM14
Carbide Insert
Cobra Carbide



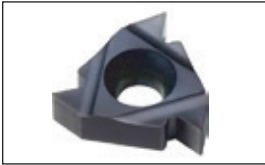
PRICE: \$7.95
SEAN42AFTN CM14
Carbide Insert
Cobra Carbide



PRICE: \$5.95
TCMT32.505-CM CM02
Carbide Insert
Cobra Carbide



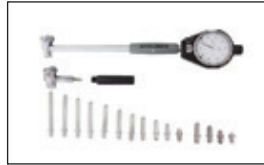
PRICE: \$4.95
DCMT21.51-CM CM02
Carbide Insert
Cobra Carbide



PRICE: \$15.95
16ERAG60-TC GM3225
Threading Insert
Millstar



PRICE: \$315.00
6pc Ultra-Precision Outside
Micrometer Set
+ Portable Micrometer Stand
+ 6pc Telescoping Gauge Set



PRICE: \$136.00
Dial Bore Gage Set
1.4-6" Measuring Range 0.0005"
Graduation Interval
Accusize



PRICE: \$595.00
CAT50 Floating
Reamer Holder
Parlec



PRICE: \$149.00
.571" Chamdrill
w/ 1pc Insert
Iscar



PRICE: \$69.00
1mm to 10mm 19pc Jobber Drill
HSSCo Set
Accusize



PRICE: \$79.00
Titanium Step Drill
Set HSS 5pc
TackLife



PRICE: \$114.27
1-5/64" Taper Shank
Drill HSS
Nachi



PRICE: \$69.95
1"-8 Spiral Flute Tap
OSG



PRICE: \$68.08
7/8-9 Spiral Flute Tap
OSG



PRICE: \$23.62
M10 x 1.5 Spiral Flute Tap
OSG



PRICE: \$69.00
3/4-14 NPT Pipe Tap
OSG

905-664-8661

Oblong Punches and Dies

IO16 OBLONG Punches and Dies	IO20 OBLONG Punches and Dies	IO26 OBLONG Punches and Dies
IO16 - IO55	IO20 - IO59	IO26 - IO62
IO16 Punches IO55 Dies \$65.00 \$65.00	IO20 Punches IO59 Dies \$70.00 \$70.00	IO26 Punches IO62 Dies \$82.00 \$82.00

KEYWAYS & WHISTLE STOPS FURNISHED UPON REQUEST!



To view our complete Oblong Stock List go to:
<http://punchtools.com/ironworker>



Punch Cross Reference Table							
Punch Tools	CST	CPD	AP	GF	Mechant	Piranha	Mubea
I16	219	F16	119	37	DH	H1	
I20	221	F20	121	40	EA	H2	
I26	228	F26	128	45	EF		

Die Cross Reference Table							
Punch Tools	CST	CPD	AP	GF	Mechant	Piranha	Mubea
I55	413	F55	313	81	JB	H1	
I59	417	F59	317	82	JC	H2	
I62	419	F62	319	85	JF		

Press Brake Louver Tools

Capacity to 12GA Stainless



For a video demonstration and more information go to:
<http://punchtools.com/louwer>

Punch Tools Inc.

Toll Free: 1.800.668.4996 • Website: www.punchtools.com • Email: orders@punchtools.com

Proudly Made in Canada by Punch Tools

ROLLS - ANGLE, PLATE & TUBE

1.5" x 3/16"	SAHINLER, Angle Roll, PK-30, New	Call	Mississauga	Westway	905 803 9999
2" x 1/4"	SAHINLER, Angle Roll, HPK-35, new	Call	Mississauga	Westway	905 803 9999
2" x 1/4"	SAHINLER, Angle Roll, HPK-50, new	Call	Mississauga	Westway	905 803 9999
2" x 1/4"	SAHINLER Angle Roll, HPK-65	Call	Mississauga	Westway	905 803 9999
3" x 1/4"	SAHINLER Angle Roll, HPK-80	Call	Mississauga	Westway	905 803 9999
4" x 3/8"	SAHINLER Angle Roll, HPK-100	Call	Mississauga	Westway	905 803 9999
1" x 1" x 1/8"	SAF - Angle Roll, BS40 Manual or Motorized 110V - New - In Stock	Call	Concord	CML Machinery	905 669 5744
2" x 2" x 3/16"	TAURING Angle Roll Saf DS, 50+HV - New - In Stock PRICE REDUCED	Call	Concord	CML Machinery	905 669 5744
2" x 2" x 3/16"	TAURING Angle Roll Saf DS 50 SIMPLY - New - In Stock	Call	Concord	CML Machinery	905 669 5744
2 1/4" x 2 1/4" x 1/4"	TAURING Angle Roll Saf DS 60 PQI - New - In Stock	Call	Concord	CML Machinery	905 669 5744
2 1/4" x 2 1/4" x 1/4"	TAURING Angle Roll Saf DS 60 BASIC - NEW - In Stock	Call	Concord	CML Machinery	905 669 5744
2 1/4" x 2 1/4" x 1/4"	TAURING Angle Roll alfa 50 H2 - New - In Stock	Call	Concord	CML Machinery	905 669 5744
2 3/8" x 1 1/4"	Tube Tauring Slalom 60 CNC Right / Left Rolling DEMO - In Stock	Call	Concord	CML Machinery	905 669 5744
3" x 3" x 3/8"	PULLMAX Model Z-31 Angle Roll - USED - In Stock	Call	Concord	CML Machinery	905 669 5744
3.5" x 3.5" x 3/8"	TAURING Angle Roll Saf DS 80 PQI - New - In Stock	Call	Concord	CML Machinery	905 669 5744
2" x 1 1/4"	Tube rolling machine Alfa 40 cnc - CNC-USED	Call	Concord	CML Machinery	905 669 5744
1" x 1 1/2"	Tube rolling machine DR 1 / MR - Manual - USED - In Stock	Call	Concord	CML Machinery	905 669 5744
40" x 1 1/8"	Slip roll - FAMAR A39-10/3 - New	Call	Concord	CML Machinery	905 669 5744
60" x 1 1/4"	Slip roll - FAMAR A39-15/2 - New	Call	Concord	CML Machinery	905 669 5744
96" x 5/16"	4 rolls - MG M 2508 - New	Call	Concord	CML Machinery	905 669 5744
120" x 7/8"	4 rolls - MG K 3022 - New	Call	Concord	CML Machinery	905 669 5744
120" x 7/8"	4 rolls - MG M 3022 with supports - Refurbished	Call	Concord	CML Machinery	905 669 5744
96" x 3/8"	4 rolls - MG M 2510 - Refurbished	Call	Concord	CML Machinery	905 669 5744
60" x 3/8"	3 rolls - SERTOM 1509 - Refurbished - Call For Price - IN STOCK	Call	Concord	CML Machinery	905 669 5744
4" x 1 1/2"	TENNSMITH powered Slip Roll, new, stock	Call	Mississauga	Westway	905 803 9999
4" X 10ga.	SAHINLER Plate Roll	Call	Mississauga	Westway	905 803 9999
5" x 3/16"	SAHINLER Roll	Call	Mississauga	Westway	905 803 9999
5" x 1/4"	SAHINLER, Hydraulic Roll, New	Call	Mississauga	Westway	905 803 9999

SAWS

Band Saw	Roll-In, Baxter, Verticut, # 114-A, 10" x 12" Capacity, Tilting Table, 3/4 Hp Motor, 550 Volt	\$3,750	Toronto	Stevens Machinery	866 798 3611
Band Saw	Roll-In, E.R. Maier, Vertical, KM1012, 10" x 12" Capacity, 1 Hp Motor, 110 Volt	\$3,950	Toronto	Stevens Machinery	866 798 3611
Band Saw	Vertical, KBC, 18" Throat, Blade Welder, Var. Speeds, 23" x 17" Table, 2 Hp	\$2,500	Toronto	Stevens Machinery	866 798 3611

Canadian Owned, Family Operated



INDUSTRIAL GASES



FORKLIFT PROPANE



WELDING EQUIPMENT



WELDING WIRE & ELECTRODES

201 Basaltic Road, Concord, ON., L4K 1G4

Ph: 416-658-1212 Email: richard@josefgases.com Website: www.josefgases.com

POWER OF THREE

- American Made Ironworkers 45 to 150 Ton Models
- Circular Cold Saws Manual to Fully Automatic for Ferrous & Non-Ferrous
- Tube & Pipe Notchers Manual, Electric & Abrasive



Best in the Business Warranty

To find a dealer in Canada contact:
Brennan Machinery Inc., London, Ontario
Call 519-455-7100 • Email sales@brennan.ca

Scotchman™ 

(800) 843-8844 WWW.SCOTCHMAN.COM



We service all makes and models of band saws and metal cutting machinery used by metal fabricators, steel manufacturers and machine shops across southern Ontario.

Services

- Emergency repairs
- Preventative maintenance
- 20-point machine inspection
- PLC software upgrades
- Operator and safety training
- Full Service Now Available In GTA

Machinery Serviced

- Horizontal and vertical band saws
- Cold saws and Iron workers
(makes include: Hyd-Mech, DoAll, Kasto, Cosen, Behringer, Marvel, Bomar, Amada, Hem Saw)

We also provide

- High performance band saw blades
- Custom-sized, welded band saw blades
- Machine coolant and lubricants
- Pre-fabricated and custom machine parts
- In stock or custom conveyors

We Are Still Open To Service Your Needs

Phone: 519-897-7292
 Fax: 519-265-9331
 office@ontariosawservice.com
 www.ontariosawservice.com

SAWS

Band Saw	HYD-MECH DM-10, 9-3/4" round cap., new, stock	Call	Mississauga	Westway	905.803.9999
Band Saw	HYD-MECH Saw, S20M, 13"cap. round, new, stock	Call	Mississauga	Westway	905.803.9999
Band Saw	HYD-MECH Saw, S20P, 13"cap. round, new, stock	Call	Mississauga	Westway	905.803.9999
Band Saw	HYD-MECH Saw, S20A, automatic feed, 13"cap., new, stock	Call	Mississauga	Westway	905.803.9999
Band Saw	HYD-MECH Saw, S23A, automatic feed., new in stock	Call	Mississauga	Westway	905.803.9999
Band Saw	PISTORIUS, Double Mitre Saw, 2 x 10" Blades, Pneu. Foot Pedal, 110/220 Volt	\$2,500	Toronto	Stevens Machinery	866.798.3611
Band Saw	HEM H10A, Automatic, 12 3/4" Capacity round, Pre-owned	Call	Concord	CML Machinery	905.669.5744
Band Saw	Various model single and double column- Steel-SS & Aluminum- New- In Stock	Call	Concord	CML Machinery	905.669.5744
Band Saw	DoALL, C916A, Automatic Band saw, 9" x 16" Cap., 10- 3/4" round, 2 Hp., Vari speed, Pre-Owned	Call	Mississauga	Westway	905.803.9999
Band Saw	Hydmach, V 18A Automatic vertical band saw, 18" capacity, 45 degree left/right tilt, Bundling, Pre-Owned	Call	Mississauga	Westway	905.803.9999
Radial Arm Saw	DEWALT, 18" Carbide Tipped Blade, 26" Travel, 5 Hp Motor, 575 Volt	\$3,950	Toronto	Stevens Machinery	866.798.3611
Cold Saw	DELTA, 12" Blade, Steel & Aluminium, Drip Coolant, 48" Infeed/Outfeed Extensions, 5 Hp Motor, 575 Volt	\$3,500	Toronto	Stevens Machinery	866.798.3611
Cold Saw	SCOTCHMAN, 12" Blade, Straight Cut, High/Low Speeds, Pneu. Infeed, Pneu. Vise, Pneu. Head	\$10,500	Toronto	Stevens Machinery	866.798.3611
Cold Saw	SOCO, 11" blade, manual, new, stock	Call	Mississauga	Westway	905.803.9999
Cold Saw	SOCO, 12-1/2" blade, manual, new, stock	Call	Mississauga	Westway	905.803.9999
Cold Saw	SOCO, 14- 1/2" blade, manual, New, Stock	Call	Mississauga	Westway	905.803.9999
Cold Saw	SOCO, 14-1/2" blade, fully automatic CNC, new, stock	Call	Mississauga	Westway	905.803.9999
Cold Saw	SOCO, Automatic, Model 350 FA, 4" Cap., Pre-Owned	Call	Mississauga	Westway	905.803.9999
Cold Saw	Pertici, Non-Ferrous "V" Notch saw, 10" Blades, 2009, Pre-owned	Call	Mississauga	Westway	905.803.9999
Cold Saw	12" & 14.5" blade, pivot or column- Steel-SS & Aluminum- New- In Stock	Call	Concord	CML Machinery	905.669.5744

SHEARS

4' x 10 ga	SAMPSON, Hydraulic Shear, New, Stock	Call	Mississauga	Westway	905.803.9999
4' x 10 ga	SAMPSON, Hydraulic Shear, New, Stock	Call	Mississauga	Westway	905.803.9999
4' x 10 ga	Darley, Hydraulic, Motorized "go to" Back Gauge, Pre-owned	Call	Mississauga	Westway	905.803.9999
3' x 16 ga	TENNSMITH, Foot Shear, New, In Stock	Call	Mississauga	Westway	905.803.9999
4' x 16 ga	TENNSMITH, Foot Shear, New, In Stock	Call	Mississauga	Westway	905.803.9999
4' x 16 ga	TENNSMITH Pneumatic Shear, new, stock	Call	Mississauga	Westway	905.803.9999
4' x 16 ga	TENNSMITH Hydraulic Shear, new, stock	Call	Mississauga	Westway	905.803.9999
4' x 16 ga	Edwards MiniShear, 24" BG, Electric, Pre-Owned	Call	Mississauga	Westway	905.803.9999
50" x 16 ga	EDWARDS, Power Shear, Manual Back Gauge, S1, Arm, 3 Front Sheet Supports, 10 Hp, 575 Volt	\$5,950	Toronto	Stevens Machinery	866.798.3611
54" x 16 ga	BARTH, 19" Gap, Foot Shear, Manual Hold Downs	\$3,950	Toronto	Stevens Machinery	866.798.3611
96" x 10 ga	EDWARDS, Power Shear, Manual Back Gauge, S1, Arm, 3 Front Sheet Supports, 10 Hp, 575 Volt	\$10,950	Toronto	Stevens Machinery	866.798.3611
96" x 10 ga	WYSONG (NEW), Mechanical, Air Clutch, 60 SPM, CNC Back Gauge, Heavy-Duty, 100% USA MADE!	Call	Toronto	Stevens Machinery	866.798.3611
1/2" x 12 FT	WYSONG (COMPLETELY REBUILT BY WYSONG), Mechanical Shear, CNC Back Gauge	\$135,000 US	Toronto	Stevens Machinery	866.798.3611
10' x 14 ga	TENNSMITH LM1014F, Shear, New	Call	Mississauga	Westway	905.803.9999
10' x 1/4"	BAYKAL Hydraulic Swing Beam Shear, with Pneumatic Sheet support, 2015, Pre-owned	Call	Mississauga	Westway	905.803.9999
10' x 1/4"	BAYKAL Hydraulic Swing Beam Shear, new, stock	Call	Mississauga	Westway	905.803.9999
10' x 1/4"	FARINA Hydraulic shear, Pre-Owned	Call	Mississauga	Westway	905.803.9999
10' x 1/4"	Allsteel Hydraulic Shear, Mot. Backgauge, Pre-owned	Call	Mississauga	Westway	905.803.9999
13' x 1/4"	Baykal, HNC 4100 x 6, Programmable Rake Angle, Blade Gap and Backgauge, 2013, Pre-owned	Call	Mississauga	Westway	905.803.9999
	Several sizes of Blades for Pearson Shear and Farina Shear -In Stock	Call	Concord	CML Machinery	905.669.5744

Looking for new or used Metal Fabrication equipment, Machine Tools or other Metalworking Machinery, check out:

www.steelmarketplace.com

Search and view what you want, when you want to!!!



POWER FLARES

For ferrous, non-ferrous and stainless steel tubing



The Olsen POWER FLARE is designed to provide the industry's best flare... every time. Developed to work with brass, copper, steel and stainless steel.

Burnishes out scratches, weld joints and similar imperfections and doesn't "work-harden" the material near the danger point.

This precision USA built machine flares 37, 45 and 90 degree O-Ring Face flange.



Represented Exclusively
in Canada by MAG Tool

1.800.661.9983

www.magtool.com

 [@magtoolinc](https://www.instagram.com/magtoolinc)

**CUSTOM
PERFORATED
METAL**

**HUGE
STAINLESS
STEEL
INVENTORY**

**STOCK
PERFORATED
METAL**

**2
DELIVERY
TRUCKS**

**WOVEN
WIRE
MESH**



**WELDED
WIRE
MESH**

**FAMILY
OWNED
AND
OPERATED**

**NEXT DAY
DELIVERIES
FROM STOCK**

Serving Canadian Industry from Coast-to-Coast
Since 1995



WELLINGTON

Perforated Sheet & Plate Inc.

P.O. Box 157, 650 Dickson Drive, Fergus, Ontario N1M 2W8

Phone: 519-843-5380 • Fax: 519-843-5358

sales@wellingtonperforated.ca • www.wellingtonperforated.ca

TOLL FREE: 1-877-226-7373 (1-877-CAN-PERF)

SHEET METAL EQUIPMENT

LOCKFORMER	20 GAUGE - SPEEDNOTCH, 4 HEAD, 60 INCH LENGTH, 1 HP 110 VOLT	\$2,950	Toronto	Stevens Machinery	866 798 3611
FLAGLER	20ga. Pittsburg Machine, new, stock	Call	Mississauga	Westway	905 803 9999
FLAGLER	24ga. Junior Pittsburg Machine, new, stock	Call	Mississauga	Westway	905 803 9999
VICON	S and Drive cleat rollformer, with pittsburg rolls and 4-1 rolls and slitter, NEW	Call	Mississauga	Westway	905 803 9999
VICON	20ga., Snap Lock Button Punch, new stock	Call	Mississauga	Westway	905 803 9999
SEAM CLOSER	Iowa Whisper Lock Vertical Pittsburg Seam Closer, Pre-owned	Call	Mississauga	Westway	905 803 9999
PUNCHING MACHINE	8 ton - ROTEX, Manual Turret Punch, #18C-2.25, 18 Stations, 26" Throat, All Punches & Dies	Volt \$5,950	Toronto	Stevens Machinery	866 798 3611
PUNCHING MACHINE	30 ton - STRIPPIT, Super 30/30, Single Head, 72 x 48 Table, Gauging, 4 Cabinets Tooling, 1 Hp, 575 Volt	\$8,950	Toronto	Stevens Machinery	866 798 3611
NOTCHER	3" x 3" x 10 GAUGE, 2 Units, In One Fixture, AIR/OIL, FOOT PEDAL	\$3,750	Toronto	Stevens Machinery	866 798 3611
NOTCHER	1/4"x 8" x 8" IMAC New Hydraulic Notching Machine, 90 degree, 600 v, elect foot pedal	Call	Toronto	Stevens Machinery	866 798 3611
NOTCHER	1/4"x 9" x 9" APOLLO, Model TV 250/6 Hydraulic, Variable Angle, 5 Hp, 600 V, Elect. Foot Pedal	\$8,950	Toronto	Stevens Machinery	866 798 3611

TUBE MACHINERY

CBC UNI 60	1" Sch 40, Mandrelless, 1 axis, 110V, 1 Ph New - In Stock	Call	Concord	CML Machinery	905 669 5744
MEMOLI ETM	2" Sch. 40 - Memoli ETM 60, Mandrelless, 1 axis, 575V, 3Ph-New- In Stock	Call	Concord	CML Machinery	905 669 5744
MEMOLI ETM	2.5" Sch. 40 - Memoli ETM 76, Mandrelless, 1 axis, 575V, 3Ph-New- In Stock	Call	Concord	CML Machinery	905 669 5744
ERCOLINA	2" Sch. 40 - 050 Top Bender, Mandrelless, 1 axis-USED- In Stock	Call	Concord	CML Machinery	905 669 5744
EUREKAMATIC	CE/CN 4" x 3/8" Bending, Scrolling & Circle - New, In Stock	Call	Concord	CML Machinery	905 669 5744
FABMASTER	Horizontal Horizontal hydraulic, HRM-45, 45 tons	Call	Mississauga	Westway	905 803 9999
MACKMA	BM 34-SA 1" PIPE - MACKMA BM 34-SA, 110Volt -1phase, 1 axis-NEW- In Stock	Call	Concord	CML Machinery	905 669 5744
MACKMA	2"Sch. 40 PIPE - MACKMA BM 60-SA, Mandrelless, 1 axis-NEW- In Stock	Call	Concord	CML Machinery	905 669 5744
MACKMA	BM 76-SA 2.5" PIPE - Mandrelless, 1 axis-NEW- In Stock	Call	Concord	CML Machinery	905 669 5744
MCB - 650	Flat Bar Bender, 2"x1/4", 7 sets of tools	Call	Mississauga	Westway	905 803 9999
RMD 100	Manual, bender, 1" sched 40 pipe, 1-3/4" tube,	Call	Mississauga	Westway	905 803 9999
RMD 150	Hydraulic, 110/1/60, 2"sch40 pipe, 2-1/2"tube, new	Call	Mississauga	Westway	905 803 9999
RMD 250	Electric, 220/1/60, 2" sch40 pipe, 2-1/2" tube, new	Call	Mississauga	Westway	905 803 9999
RMD 325	Electric, 220/1/60, 2"sch80 pipe, 3"tube, programmable	Call	Mississauga	Westway	905 803 9999
SOCCO	Tuber Bender CNC, SB 39 Auto, 1-1/2"cap., New	Call	Mississauga	Westway	905 803 9999
SOCCO	Tuber Bender CNC, SB 63 Auto, 2-1/2"cap., New	Call	Mississauga	Westway	905 803 9999
Millemiglia	DSE 70 Expanding & Reducing Machine 1" to 2 3/4" -USED- In Stock	Cal	Concord	CML Machinery	905 669 5744

WELDING EQUIPMENT

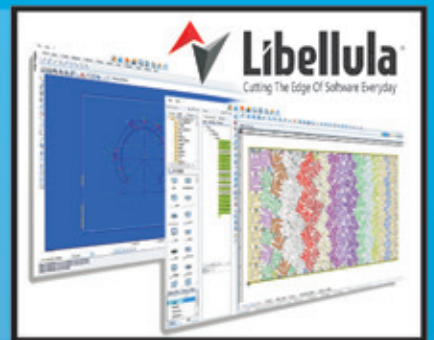
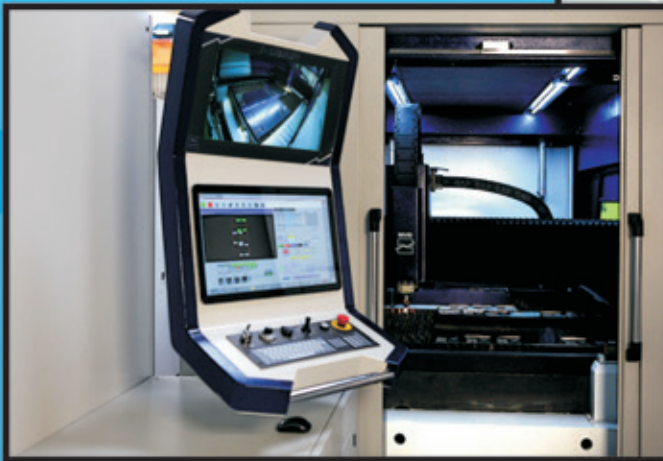
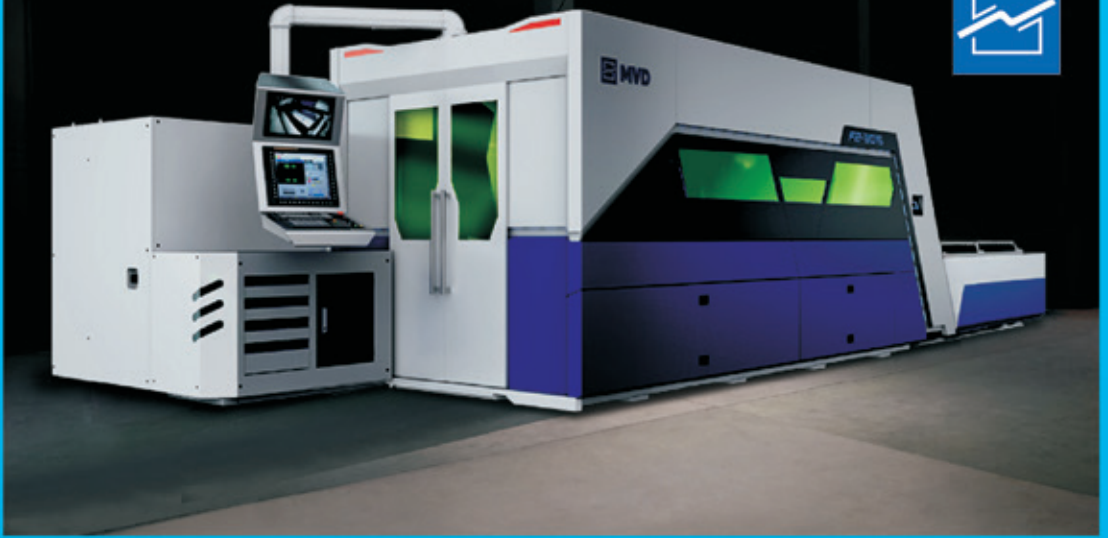
Tig & Stick Welder,	275 Amp, LINCOLN, Plug, Cables, Microstart, Sq. Wave, 575/1/60 Volt	\$3,950	Toronto	Stevens Machinery	866 798 3611
Press Welder,	100 KVA, PRECISION, 24" TH, Water Cooled Tips, 550 V	\$5,950	Toronto	Stevens Machinery	866 798 3611
Spot Welder,	18 KVA, REX, 14" Arms, Water Cooled Tips, Mech. Treadle, 550 V	\$1,500	Toronto	Stevens Machinery	866 798 3611
Spot Welder,	10 KVA., WELDOMATIC, 12" Arms, Water-Cooled Tips, Mech. Treadle, 550 V	\$2,950	Toronto	Stevens Machinery	886 798 3611
Spot Welder,	15 KVA, WELDOMATIC, 7-1/2" Arms, Water Cooled Tips, Mech. Treadle, 550 V	\$3,950	Toronto	Stevens Machinery	886 798 3611
Spot Welder,	PRECISION, Press Type, 100 KVA, 24" Th, Water-Cooled Tips, 550 V	\$5,950	Toronto	Stevens Machinery	866 798 3611
Wirefeeder	FRONIUS, VR1500, Robotic, 4 Roller Drive, Digital Controlled For 3 rd Axis, New	\$2,500	Toronto	Stevens Machinery	886 798 3611

Looking for new or used Metal Fabrication equipment, Machine Tools or other Metalworking Machinery, check out:

www.steelmarketplace.com

Search and view what you want, when you want to!!!

laser



416-220-5910
877-242-9706
mvdcanada.com

SALES - SERVICE - PARTS



*Same Day
Pick-Up*

NEXT DAY DELIVERY

Central, Southern, Southwestern
and Western Ontario including the GTA.



SELECTION

Full Range of Carbon, Non-Ferrous & Specialty Metals

SERVICES

Saw Cutting • Prime Painting
Shearing • Rebar Fabrication • Burning

Providing Exceptional Service for 100 Years

NIAGARA

7771 Stanley Ave., P.O. Box 837,
Niagara Falls, ON L2E 6V6
Head Office: 905-354-5691 • Fax: 905-356-0809
Toll Free: 1-800-263-7110

BOWMANVILLE

222 Baseline Rd. E., Bowmanville, ON L1C 1A4
Phone: 905-623-5544 • Fax: 905-623-5564
Toll Free: 1-866-623-5544
(Former Site of Greeley Steel)

www.salitsteel.com

TUBE MACHINERY

CBC UNI 60	1" Sch 40, Mandrelless, 1 axis, 110V, 1 Ph New - In Stock	Call	Concord	CML Machinery	905 669 5744
MEMOLI ETM	2" Sch. 40 - Memoli ETM 60, Mandrelless, 1 axis, 575V, 3Ph-New- In Stock	Call	Concord	CML Machinery	905 669 5744
MEMOLI ETM	2.5" Sch. 40 - Memoli ETM 76, Mandrelless, 1 axis, 575V, 3Ph-New- In Stock	Call	Concord	CML Machinery	905 669 5744
ERCOLINA	2" Sch. 40 - 050 Top Bender, Mandrelless, 1 axis-USED- In Stock	Call	Concord	CML Machinery	905 669 5744
EUREKAMATIC	CE/CN 4" x 3/8" Bending, Scrolling & Circle - New, In Stock	Call	Concord	CML Machinery	905 669 5744
FABMASTER	Horizontal Horizontal hydraulic, HBM-45, 45 tons	Call	Mississauga	Westway	905 803 9999
MACKMA	BM 34-SA 1" PIPE - MACKMA BM 34-SA, 110Volt -1phase, 1 axis-NEW- In Stock	Call	Concord	CML Machinery	905 669 5744
MACKMA	2"Sch. 40 PIPE - MACKMA BM 60-SA, Mandrelless, 1 axis-NEW- In Stock	Call	Concord	CML Machinery	905 669 5744
MACKMA	BM 76-SA 2.5" PIPE - Mandrelless, 1 axis-NEW- In Stock	Call	Concord	CML Machinery	905 669 5744
MCB - 650	Flat Bar Bender, 2"x1/4", 7 sets of tools	Call	Mississauga	Westway	905 803 9999
RMD 100	Manual, bender, 1" sched 40 pipe, 1-3/4" tube,	Call	Mississauga	Westway	905 803 9999
RMD 150	Hydraulic, 110/1/60, 2" sch40 pipe, 2-1/2" tube, new	Call	Mississauga	Westway	905 803 9999
RMD 250	Electric, 220/1/60, 2" sch40 pipe, 2-1/2" tube, new	Call	Mississauga	Westway	905 803 9999
RMD 325	Electric, 220/1/60, 2"sch80 pipe, 3"tube, programmable	Call	Mississauga	Westway	905 803 9999
SOCO	Tuber Bender CNC, SB 39 Auto, 1-1/2"cap., New	Call	Mississauga	Westway	905 803 9999
SOCO	Tuber Bender CNC, SB 63 Auto, 2-1/2"cap., New	Call	Mississauga	Westway	905 803 9999
Millemiglia	DSE 70 Expanding & Reducing Machine 1" to 2 3/4" -USED- In Stock	Cal	Concord	CML Machinery	905 669 5744



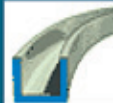



WELDING EQUIPMENT

Tig & Stick Welder,	275 Amp, LINCOLN, Plug, Cables, Microstart, Sq. Wave, 575/1/60 Volt	\$3,950	Toronto	Stevens Machinery	866 798 3611
Press Welder,	100 KVA, PRECISION, 24" TH, Water Cooled Tips, 550 V	\$5,950	Toronto	Stevens Machinery	866 798 3611
Spot Welder,	18 KVA, REX, 14" Arms, Water Cooled Tips, Mech. Treadle, 550 V	\$1,500	Toronto	Stevens Machinery	866 798 3611
Spot Welder,	10 KVA, WELDOMATIC, 12" Arms, Water-Cooled Tips, Mech. Treadle, 550 V	\$2,950	Toronto	Stevens Machinery	886 798 3611
Spot Welder,	15 KVA, WELDOMATIC, 7-1/2" Arms, Water Cooled Tips, Mech. Treadle, 550 V	\$3,950	Toronto	Stevens Machinery	886 798 3611
Spot Welder,	PRECISION, Press Type, 100 KVA, 24" Th, Water-Cooled Tips, 550 V	\$5,950	Toronto	Stevens Machinery	866 798 3611
Wirefeeder	FRONIUS, VR1500, Robotic, 4 Roller Drive, Digital Controlled For 3 rd Axis, New	\$2,500	Toronto	Stevens Machinery	886 798 3611

MISCELLANEOUS EQUIPMENT

Air Compressor - 10 HP, 80 Gallon Horizontal Tank, Two Stage Piston Vee Head, 550 Volt	\$2,950	Toronto	Stevens Machinery	866 798 3611
Air Compressor - 15 HP, 120 Gallon Horizontal Tank, Two Stage Piston Vee Head, 550 Volt	\$3,950	Toronto	Stevens Machinery	866 798 3611
Oil Filtering and Transfer System, 9gpm, portable, 110/1/60 , new	\$950.	Mississauga	Westway	905 803 9999
SAND BLAST CABINETS- EMPIRE, PF-3648 SRB-4, 2 Gloves, Gun, Lights, 1 Hp, 110 Volt	\$3,950	Toronto	Stevens Machinery	866 798 3611

Kubes Steel Quick Reference Chart for 2-Axis Section Rolling and Bending

							
Beams Easy Way To 40" section depth	Beams Hard Way To 27" section depth	Beams Swept To 40" section depth	Beams Cambered To 40" section depth	Tee Stem Up/Down To 18" Section Depth	Tee Stem In To 18" Section Depth	Tee Stem Out To 18" Section Depth	Pipe to 42" Diameter
							
Channel Toe In To 18" section depth	Channel Toe Out To 18" section depth	Channel Hard Way To 18" section depth	Kubes can custom form Channels to your specifications	Square to 10" x 10"	Round to 10 1/2" Diameter	Flat Bar Easy Way To 4" x 22"	Flat Bar Hard Way To 2 3/8" x 16"
							
Angle Leg In To 8 x 8 x 1 1/4"	Angle Short Leg In To 8 x 8 x 1 1/4"	Angle Long Leg In To 8 x 8 x 1 1/4"	Angle Heel In To 8 x 8 x 1 1/4"	Angle Leg Out To 8 x 8 x 1 1/4"	Angle Short Leg Out To 8 x 8 x 1 1/4"	Angle Long Leg Out To 8 x 8 x 1 1/4"	Angle Heel Out To 8 x 8 x 1 1/4"
							
Square HSS To 20" x 20"	Square HSS Diagonal To 20" x 20"	Rectangular HSS Easy Way To 20" x 16"	Rectangular HSS Hard Way To 20" x 16"	Round HSS To 42" Diameter	Standard Rail Ball Up To 135# / Yd	Standard Rail Ball In To 135# / Yd	Standard Rail Ball Out To 135# / Yd

KUBES STEEL
WHERE METAL TAKES SHAPE

Canada's Source for:
Structural Section, Pipe, Plate Rolling and Forming
Solutions for Architectural, Structural, Manufacturing,
Mining and Mechanical Process Applications



STEEL
PLUS NETWORK LLC



Contact us:
930 Arvin Avenue
Stoney Creek, Ontario
Canada L8E 5Y8
Toll Free: 1.877.327.8357
Telephone: 905.643.1229
Facsimile: 905.643.4003
Email: kubes@kubesteel.com
www.kubesteel.com

ISO 9001

Where service is still personal



MISCELLANEOUS EQUIPMENT

Zakron 2 axis press brake gage system X & Y - New- In Stock	Call	Concord	CML Machinery	905 669 5744
ROPPER WHITNEY rotary turning, 24ga., pre-owned	Call	Mississauga	Westway	905 803 9999
ROPPER WHITNEY rotary turning, 24ga., pre-owned	Call	Mississauga	Westway	905 803 9999
WATERJET CUTTING, Multicam . 4000 series, 5' x 10' cap, 2009, 50Hp- 60,000 PSI, KMT Pump, Pre-owned	Call	Mississauga	Westway	905 803 9999

STEEL MARKETPLACE	ANGLE/FLAT/ROUNDS/SQUARES/CHANNELS			STEEL MARKETPLACE
25 pcs Angle 1 x 1 x 3/16 - 20'	Call	Niagara Falls	Salit Steel	800 263 7110
4 tons Angle 1 1/4 x 1 1/4 x 1/4 x 10'	Call	Niagara Falls	Salit Steel	800 263 7110
20 tons Angle 3 x 3 x 1/2 - 40' A36/A529	Call	Niagara Falls	Salit Steel	800 263 7110
2 tons Flat Bar 5/16 x 1 1/4" - 20'	Call	Niagara Falls	Salit Steel	800 263 7110
2 tons Square Bar 1 1/4 - 20'	Call	Niagara Falls	Salit Steel	800 263 7110
12 pcs MC12 @ 10.6 x 15'	Call	Niagara Falls	Salit Steel	800 263 7110

STEEL MARKETPLACE	RAIL - STEEL			STEEL MARKETPLACE
30# ASCE RAIL - 20' & 30' LTHS.	Call	Hamilton	Central Rail	905 521 8477
40# ASCE RAIL - 20', 30' & 40' LTHS.	Call	Hamilton	Central Rail	905 521 8477
60# ASCE RAIL - 20', 30' & 40' LTHS.	Call	Hamilton	Central Rail	905 521 8477
80# ASCE RAIL - 39' LTHS.	Call	Hamilton	Central Rail	905 521 8477
85# ASCE RAIL - 39' LTHS.	Call	Hamilton	Central Rail	905 521 8477

STEEL MARKETPLACE	TUBE AND PIPE			STEEL MARKETPLACE
20 pcs 3x3x.125x24' -A500C	Call	Niagara Falls	Salit Steel	800 263 7110
13 pcs 5.5 x 5.5 x .313 x 52' -A500C	Call	Niagara Falls	Salit Steel	800 263 7110
5 pcs 6x3x.313x52.5' - 50MC	Call	Niagara Falls	Salit Steel	800 263 7110
4 pcs 6x3x .313x48' -A500C	Call	Niagara Falls	Salit Steel	800 263 7110
8 pcs 8x3x.500x48' -A500C	Call	Niagara Falls	Salit Steel	800 263 7110
8 pcs 8x6x.188C -9' to 11' CSA	Call	Niagara Falls	Salit Steel	800 263 7110
2 pcs 14x14x.375x48' A500C	Call	Niagara Falls	Salit Steel	800 263 7110
1 pcs 114x14x.375x39' A500C	Call	Niagara Falls	Salit Steel	800 263 7110
2 pcs 16x12x.313x27.083' A500C	Call	Niagara Falls	Salit Steel	800 263 7110
6 pcs 12.75" OD x 250 x 48' A500C	Call	Niagara Falls	Salit Steel	800 263 7110
14 pcs 14" OD x 625 - 7' to 9'	Call	Niagara Falls	Salit Steel	800 263 7110
1 pcs PIPE -24" OD x .374 x 23'	Call	Niagara Falls	Salit Steel	800 263 7110
1 pcs PIPE -24" OD x .626 x 18.083'	Call	Niagara Falls	Salit Steel	800 263 7110
8 pcs PIPE -42" OD x .630 - 6' to 21'	Call	Niagara Falls	Salit Steel	800 263 7110

STEEL MARKETPLACE	WIDE FLANGE			STEEL MARKETPLACE
10 pcs 12 x 58 - 9' - 13'	Call	Niagara Falls	Salit Steel	800 263 7110
13 pcs 14 x 38 x 9'	Call	Niagara Falls	Salit Steel	800 263 7110
8 pcs 14 x 61 x 8.5'	Call	Niagara Falls	Salit Steel	800 263 7110
1 pcs WF27 x 307 x 25'	Call	Niagara Falls	Salit Steel	800 263 7110
1 pcs WF30 x 124 x 20.833'	Call	Niagara Falls	Salit Steel	800 263 7110
1 pcs WF36 x 160 x 60'	Call	Niagara Falls	Salit Steel	800 263 7110



STEEL MARKETPLACE

12 - 111 Forth Ave., Suite #351 St. Catharines, ON L2S 3P5

Toll Free: 1-800-263-1440 Phone: 905-685-4766

Email: info@steelmktplace.com

Website: www.steelmktplace.com

Published Monthly & Distributed Across Canada

Publisher: Colin Klein Design & Layout: Peak Imaging

To re-direct, cancel or obtain additional copies, please email your request to: info@steelmktplace.com

NEXT ISSUE: DECEMBER 2021,
CLOSING DATE FOR NEXT ISSUE: NOVEMBER 22, 2021

Steel Marketplace Publication and Logo Copyright © 2013. All rights reserved. No part of this publication may be reproduced without the express permission from the publisher. The publisher assumes no responsibility for statements or claims made by advertisers.

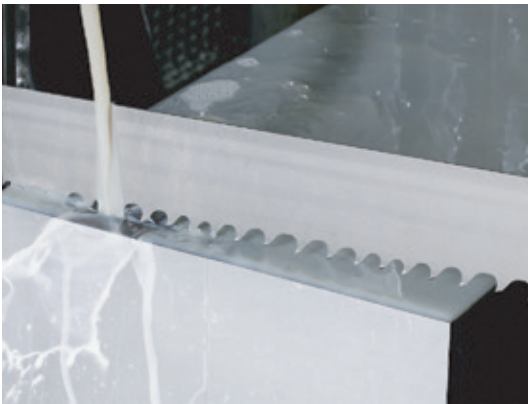
NOVEMBER 2021 ADVERTISERS INDEX

COMPANY	PAGE	COMPANY	PAGE
CML Machinery	4	MAG Tools Inc.	17
Central Rail Supply	10	MC Machinery	5
Cutting Tool Pickers	12 - 13	Modern Tools Ltd	3
Fabricating Machinery Solutions (FMS)	11	Myer Salit	20
FMS SlagHog	10	Punch Tools	14
Ferric Machinery	FC	Scan Tube	7
Hans Weber	8	Scotchman Industries	15
HydMech Saws	6	Stevens Machinery	9
Josef Gases	14	Tri-County Saw Services	16
Kubes Steel	21	Westway Machinery Ltd.	2, BC
Machine Solutions	19	Wellington Perforated	18
		Wikus Canada	23



WIKUS CANADA

Benefit from leading edge band saw blade technology and direct support.



Follow us



BUY WITH CONFIDENCE

WIKUS customers benefit from our award-winning innovation and trend-setting products.

[Click here to read more](#)

Your Benefits at a Glance:

- Quality “Made in Germany”
- Technical support from the manufacturer
- Sampling and performance cutting tests with WIKUS staff
- Over 60 years of experience in solving challenging sawing applications
- International knowledge base of sawing applications
- Improved efficiency and reduced costs per cut

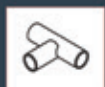


Your Contact:

WIKUS Canada Ltd. · 3550 Laird Road, Unit 3, Mississauga, ON L5L 5Z7
Tel: +1 905-670-5785 · Toll Free: +1 833 WIKUS-CA · sales@wikus-canada.ca

FABMaster

HYDRAULIC IRONWORKERS & PUNCHING MACHINES



Pipe Notching



Angle Bending



Punching



Rounding off
Corners



Press Brake



Punching



Radius Corners



Pipe Punching



Cutting and
Rounding off



Bilateral
Rounding off



Round Bar Shear



Square Bar Shear



Channel Shear



I Beam Shear



Angle Shear



HIGHEST
QUALITY
BEST
VALUE.



Flat Bar Shear



Angle Miter Shear



Vee Notching



Notching



Notching



Westway Machinery Ltd.
www.westwaymachinery.com

647-308-5985